

WQ WINWICK QUAY

JUNCTION 9 // M62 WARRINGTON

CHETHAM



SAT NAV: **WA2 8RF**

COURT: **CHETHAM**

UNIT: **02/03**

SIZE: **15,015 SQ FT**
1,394.9 SQ M

unit
02/03



// Location

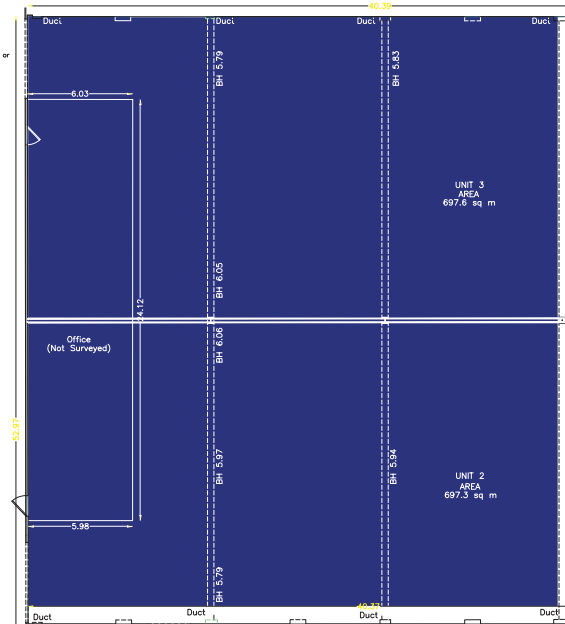
Winwick Quay is strategically located approximately 3 miles north of Warrington town centre and less than 0.5 miles from J9 of the M62 motorway. The property benefits from significant prominence and visibility to the main A49 dual carriageway which links the town centre to the motorway.

// Description

Units at Chetham Court provide excellent accommodation offering a highly prominent business location. The units are suitable for a variety of uses including Trade Counter and Leisure business and consent for other business areas may be possible. Chetham Court's position benefits from 50,000 passing vehicles every day.

// Specification

- Low site density, with ample parking/yard areas
- Full CCTV security
- Concrete floors
- High bay lighting
- 3 phase electricity
- 6m clearance heights
- Electric roller shutter doors to a selection of units
- Newly painted exterior



total	15,015 sq ft	1,394.9 sq m
-------	--------------	--------------

Riddelltps
0161 835 9333
www.riddelltps.co.uk

COLLIERS CRE
0161 831 3300
collierscre.com

